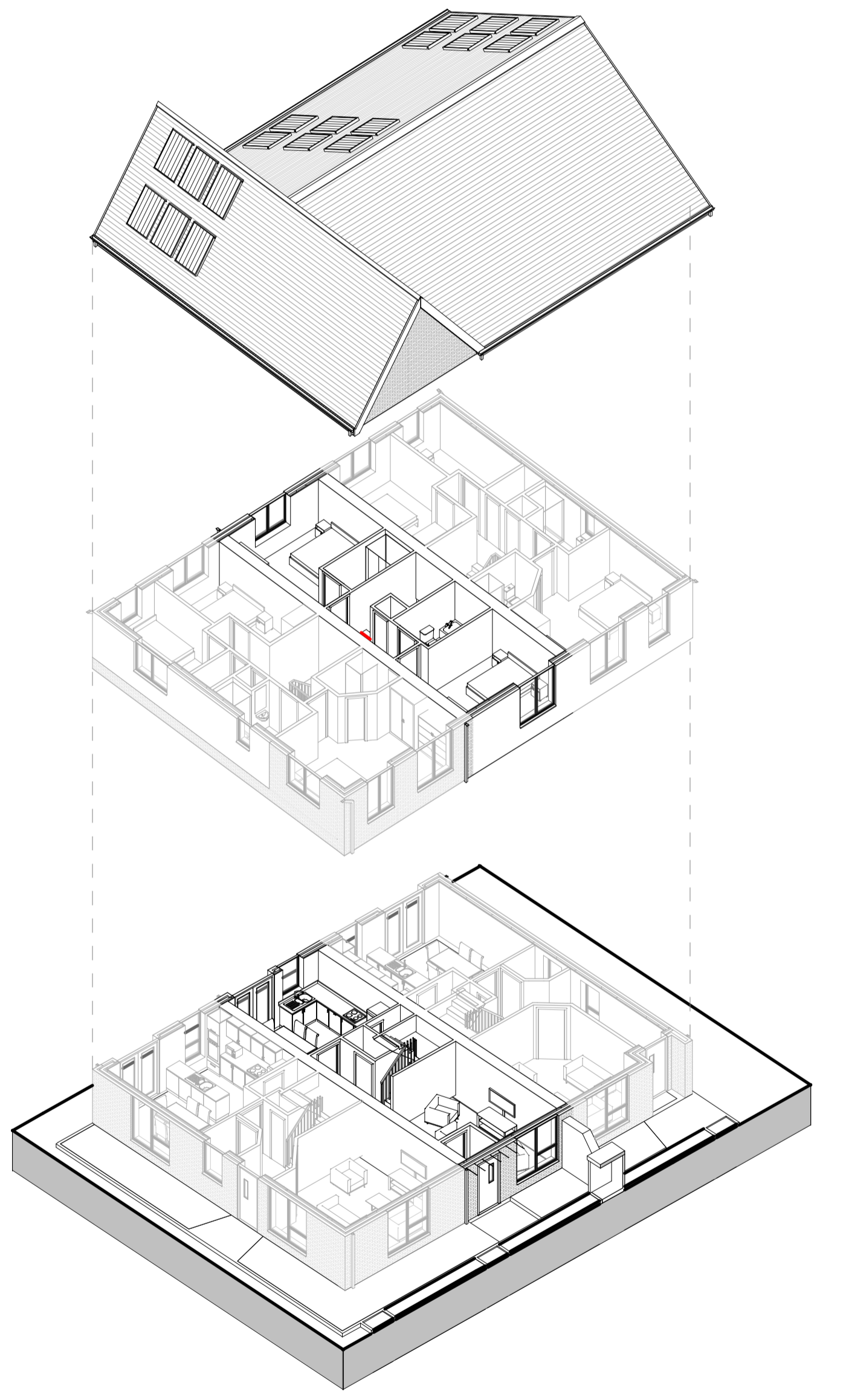
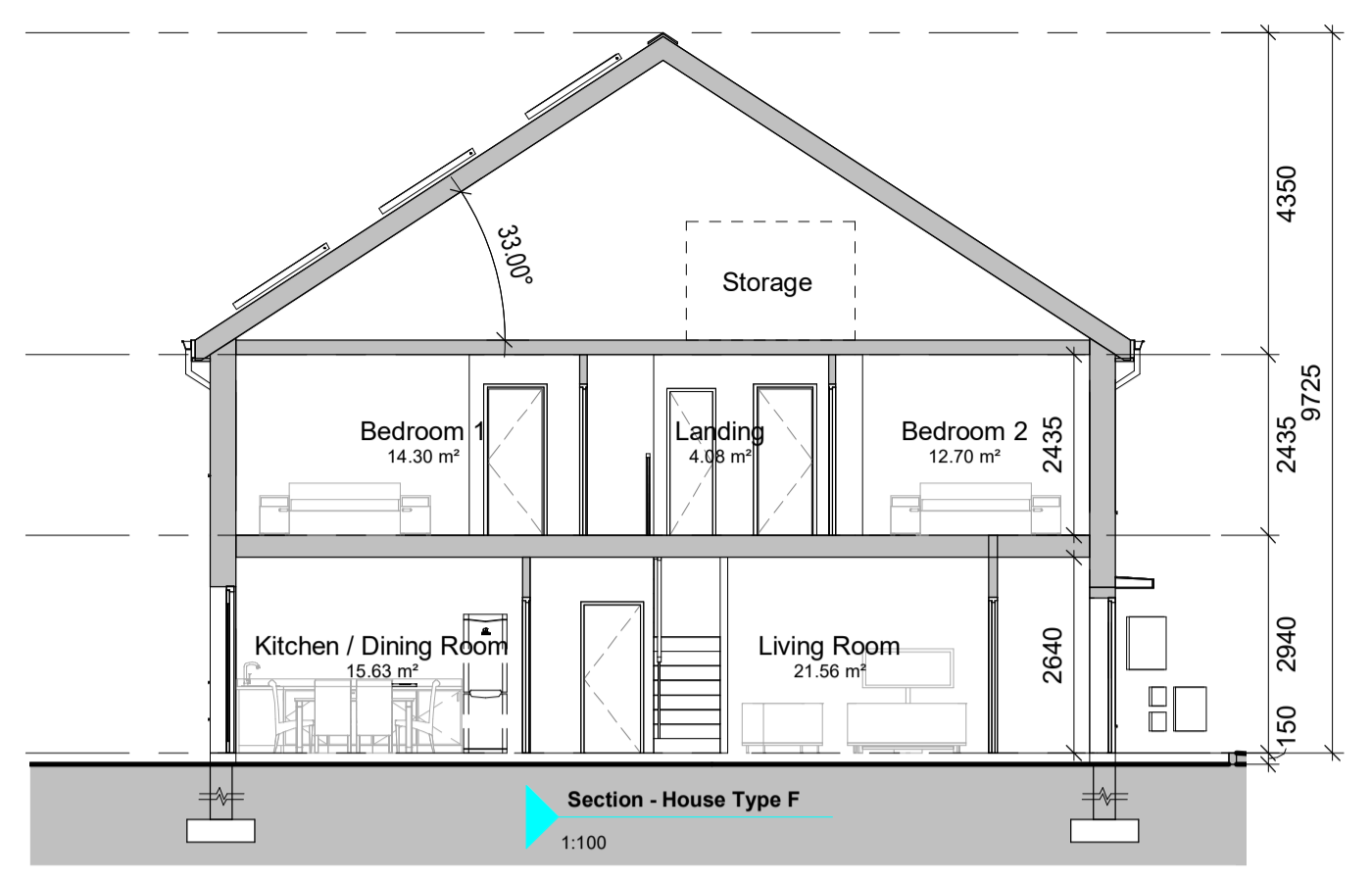
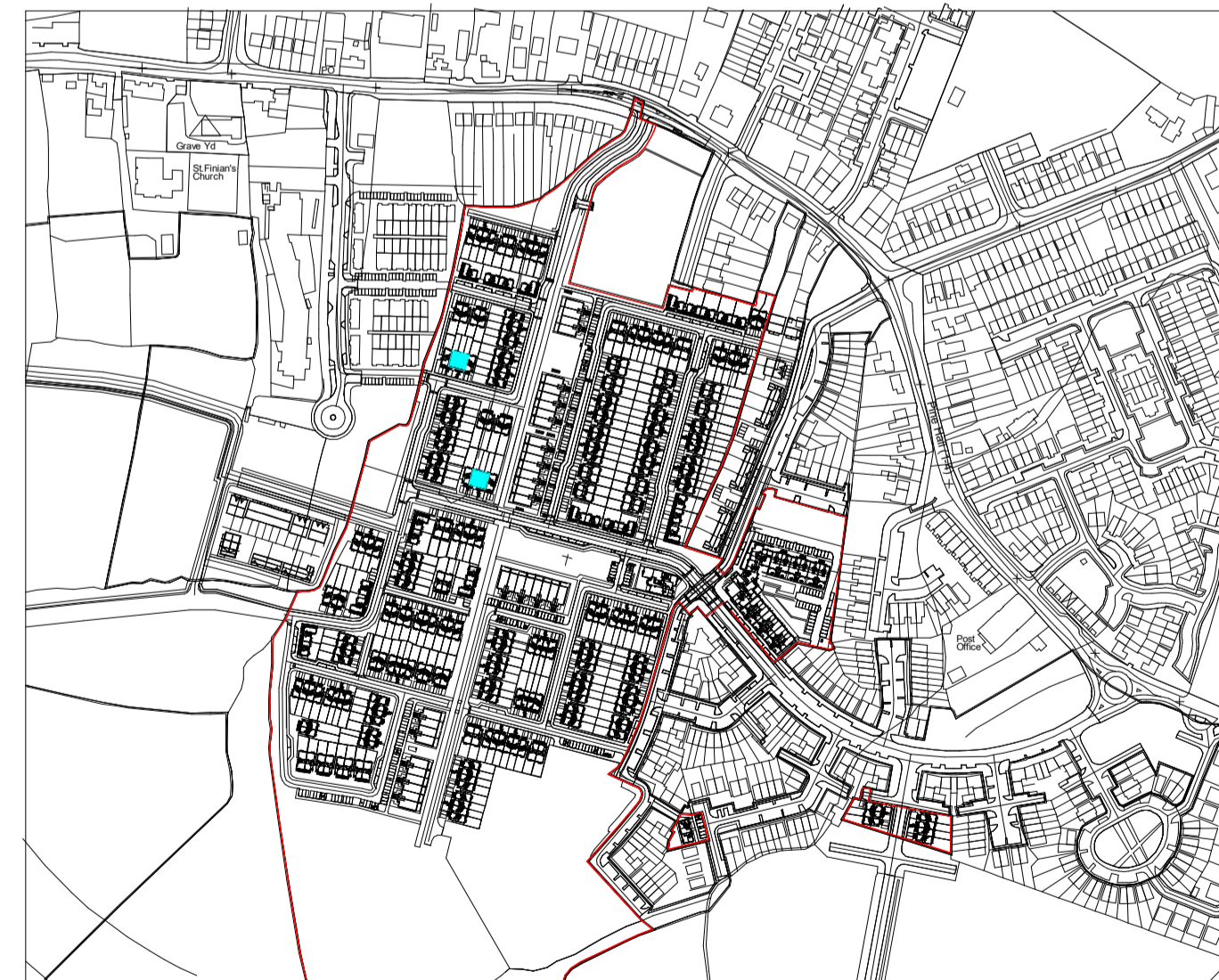


House Type F - 2No. Bedrooms	
Room Name	Room Area
<b>Level 00</b>	
Kitchen / Dining Room	15.63 m <sup>2</sup>
Living Room	21.56 m <sup>2</sup>
Utility	3.63 m <sup>2</sup>
W.C	0.74 m <sup>2</sup>
<b>Level 01</b>	
Bathroom	4.76 m <sup>2</sup>
Bedroom 1	14.30 m <sup>2</sup>
Bedroom 2	12.70 m <sup>2</sup>
En Suite	3.85 m <sup>2</sup>
HP	0.58 m <sup>2</sup>
Landing	4.08 m <sup>2</sup>
Aggregate Living Area	38.49m <sup>2</sup>
Ground Floor GIFA	43m <sup>2</sup>
Aggregate Bed Area	26.73m <sup>2</sup>
First Floor GIFA	43m <sup>2</sup>
Attic Storage	4m <sup>2</sup>
Total Storage	4m <sup>2</sup>
<b>Total Floor Area = 86m<sup>2</sup></b>	



NOTES / LEGEND

Key Plan:

Rev:	Date:	Description:	By:
1	01/09/2019	PLANNING ISSUE	MOLA

Drawing Status: Planning Application

Reply Address: 2 Donnybrook Road, Donnybrook, Dublin 4, Ireland. Telephone +353 1 218 9900. www.molaarchitecture.com

**MOLA**  
ARCHITECTS ■ PLANNERS ■ URBAN DESIGNERS ■

Client: Cairn Homes Properties Ltd.  
Project: Newcastle South  
Drawing: House Type F - Part V

Date: 01/09/19 Scale: As indicated  
Drawn By: EC Approved By: NN Int. Job No: 18001

Project No: NCS18- MOLA-00- ZZ- DR- A- XX 0027 P 1

© COPYRIGHT This drawing or design may not be reproduced without permission